



**Sheering Lower Road, Sawbridgeworth, CM21 9RF**  
**£1,200 Per Month**

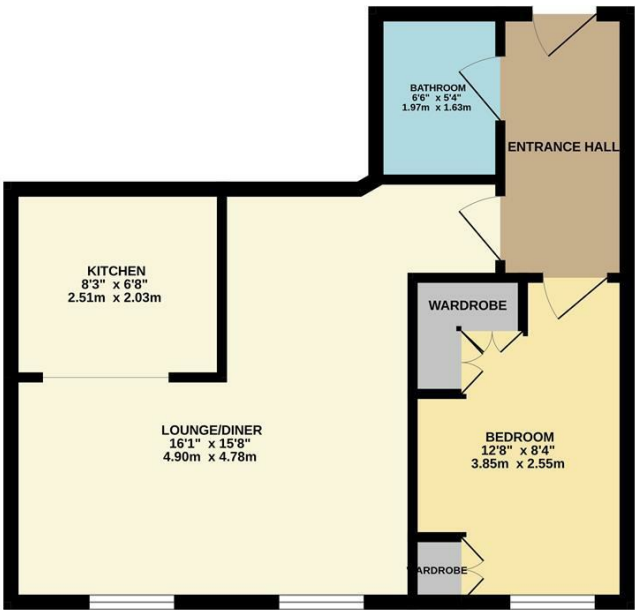
- One Bedroom
- Recently decorated
- Second Floor
- Available NOW
- Private Parking
- Unfurnished

# Sheering Lower Road, Sawbridgeworth, CM21 9RF

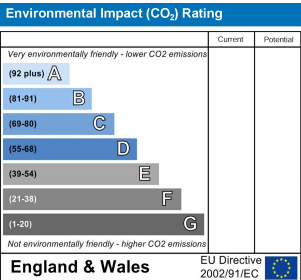
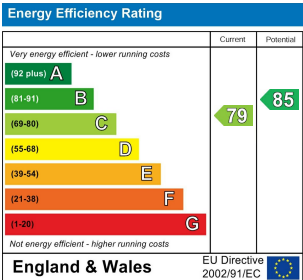
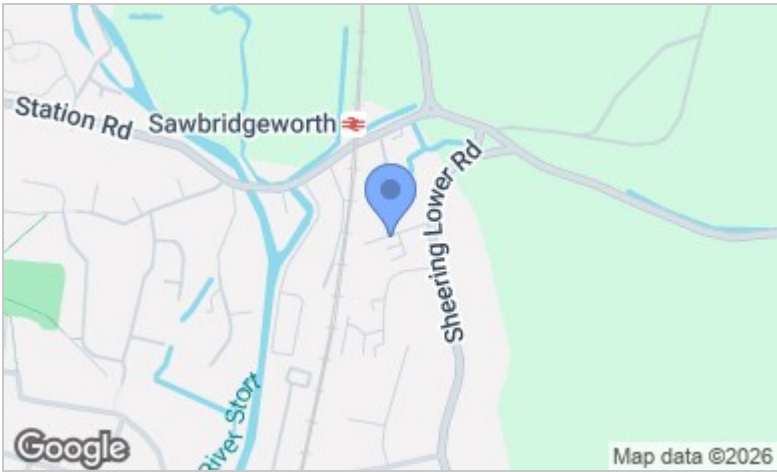
## £1,200 Per Month

**\*CURRENTLY BEING RE-CARPETED & DECORATED\*** A one bedroom second floor home, situated in a popular development of apartments, close to the train station and with pleasant views overlooking communal grounds and picturesque duck pond. The property is accessed via a secure door entry system and has well maintained communal hallways, stairs and lifts as well a large residents parking area. The property has an entrance hall, double bedroom with wardrobes, reception room with space for living & dining areas, modern bathroom and fitted kitchen with white goods. Available NOW on an unfurnished basis.

GROUND FLOOR  
453 sq.ft. (42.1 sq.m.) approx.



TOTAL FLOOR AREA: 453 sq.ft. (42.1 sq.m.) approx.  
Whilst every attempt has been made to ensure the accuracy of the floorplan contained here, measurements of doors, windows, rooms and any other items are approximate and no responsibility is taken for any error, omission or mis-statement. This plan is for illustrative purposes only and should be used as such by any prospective purchaser. The services, systems and appliances shown have not been tested and no guarantee as to their operability or efficiency can be given.  
Made with Metropix ©2025



These particulars, whilst believed to be accurate are set out as a general outline only for guidance and do not constitute any part of an offer or contract. Intending purchasers should not rely on them as statements of representation of fact, but must satisfy themselves by inspection or otherwise as to their accuracy. No person in this firm's employment has the authority to make or give any representation or warranty in respect of the property.